

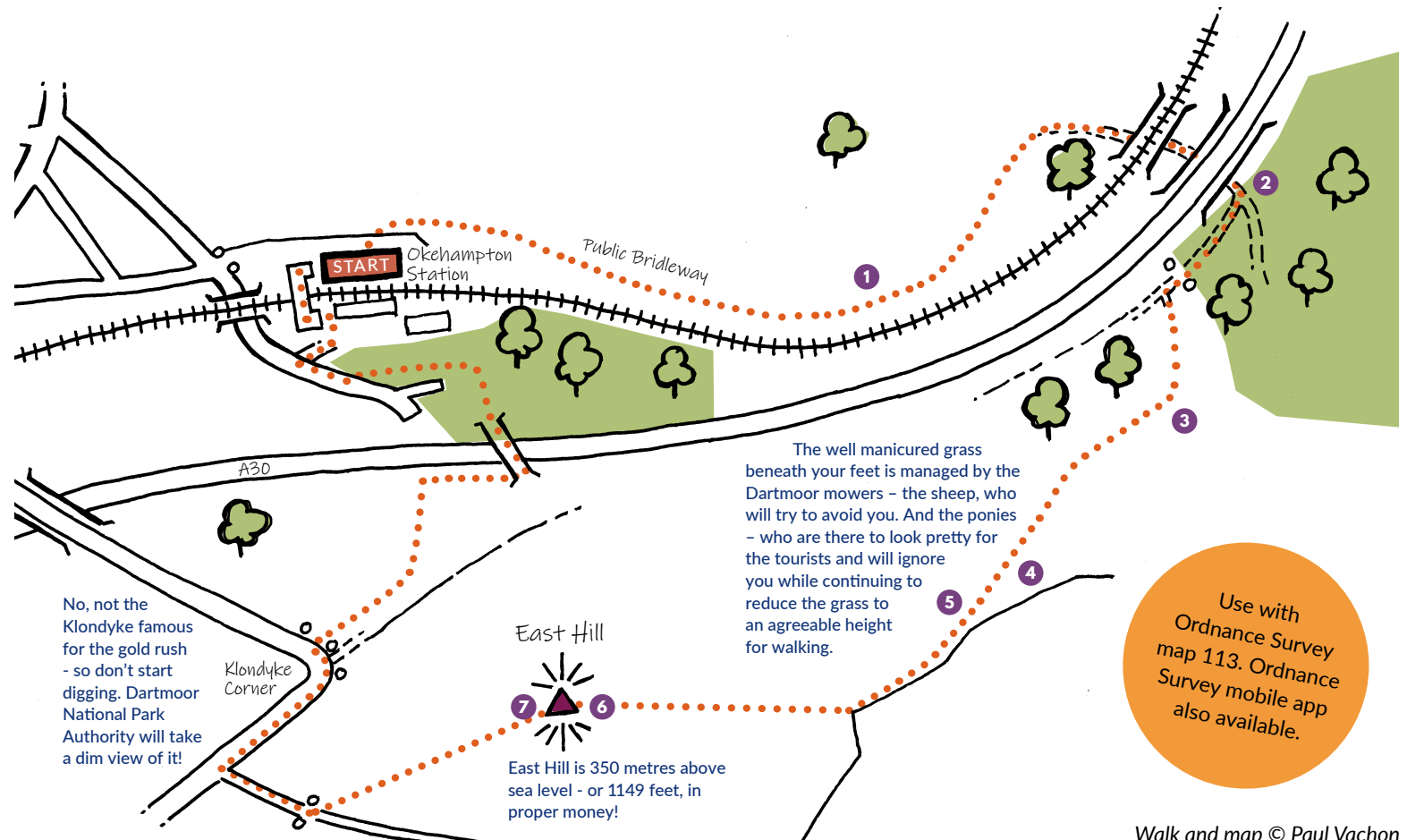
Walks from the Railway

EAST HILL

The best panoramic views across Devon and the highest peaks of Dartmoor

2.3 MILES | 1-2 HOURS

Line	Dartmoor Line
Start/End	Okehampton station
Facilities	Cafe and toilets at Okehampton station
Train times	GWR.com or 03457 484950



Walk and map © Paul Vachon

From the station entrance, cross over to the green gate* opposite and down the narrow steps to the Public Bridleway below. *If gate closed, walk down the slope from the station. At the road stay right, then hook immediately right on to the path.

Turn right and go through the gate marked Tramlines Woods. This is also part of the cycle network, so beware of cyclists. Continue along the track, and after a few minutes you will come to another gate.

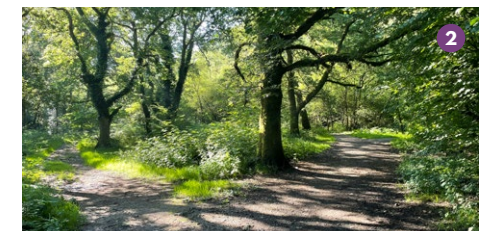


The track then opens out into a field (1) where occasionally cattle will be grazing. Keep to the track! One more gate and then you are at the railway viaduct at Fatherford.

Passing the ford, carry straight on under the viaduct. There is a fingerpost pointing the direction to Klondyke Corner. Go through the gate and follow the path to the point where it splits (2). Take the right fork. A few paces later it splits again. Again go right.

Follow this steep path up the hill. After 100 metres you will come to a gate. Immediately after the gate turn left onto the grass path heading uphill. This is fairly steep and slippery when wet.

After about 50 metres after the wooded section you will come to a 'T' junction (3). Turn right onto this path and continue upwards - ignoring all paths to right or left.





The path gets wider as it levels out. After a few minutes you will see a sparse line of wind blown trees in a stone wall (4). Head towards the wall and follow it towards the right. Looking over the wall, to the left, you will spy the rocky summit of Belstone Tor and beyond that the rounded hill of Cosdon - or Cawsand as it marked on older maps (5).



Follow the path alongside the wall - you are still going upwards but on a gentler slope. After a couple of minutes you will pass a gate in the wall and a little further on the wall veers off to the left. At which point you need to head off right to the highest point of the hill.

Make your way as best you can, avoiding gorse and bracken until you see two small square lumps of concrete (6) and beyond it the taller 'trig' point marker.

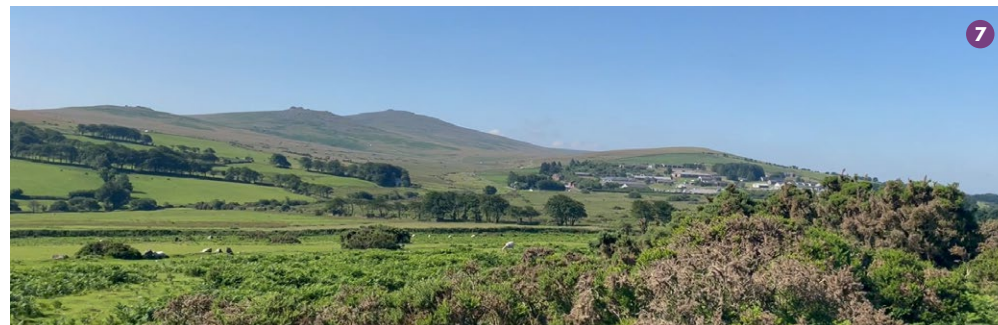


This is East Hill and from this point are probably the best panoramic views of North Devon in front of you.

At the 2 'o' clock position, on the horizon, you may be able to see the hills of Exmoor. Towards 11 'o' clock are the Bodmin Moors in Cornwall and at 9 'o' clock you may spy the sharp point of Brent Tor with its church on its summit. wlt's useful to have an OS map (or their mobile app) as reference.

To the South you will see the high wilderness mountains of North Dartmoor. Towards the right (7) you will see the ascending summits of Rowtor, West Mill and Yes Tor.

The buildings to the right belong to the Battle Camp military training facility.



To complete the walk, head down the hill towards the army camp. After approximately 200 metres you will come to the track and a cattle grid. Follow the track down to the road and turn right.

After a couple of minutes you will come to a sharp corner that has two gates at its corner. Take the left hand gate marked Public Bridleway and follow the wide grass path down to the fence at the bottom of the field.

At the bottom the path turns right and runs alongside the footbridge for about 100 metres until you reach the fingerpost, gate and footbridge that crosses the A30.

Over the bridge you will find another gate and a fingerpost. Follow the narrow path down the hill marked 'Permitted path to Okehampton'. Just a little way down you will be at a 'T' junction in the path. You can take either way - left is a shorter route, right takes a longer route through this wooded wildlife area. Both end at the same gate opening onto the road.

Walk down the road and after 50 metres turn right into the car park. To the right is a tourist information board. On the opposite side of the car park is the railway station. Cross over the line via the footbridge.

RANGER CODE

	
Close gates behind you	Use a campsite or check the website dartmoor.gov.uk
	
Keep your dog on a lead	Bag up litter and take it home
	
Share the roads and bridleways	Don't feed the ponies

LOVE MOOR LIFE 

More walks to enjoy

GREATSCENICRAILWAYS.CO.UK/WALKS

**Devon & Cornwall
RAIL PARTNERSHIP**

